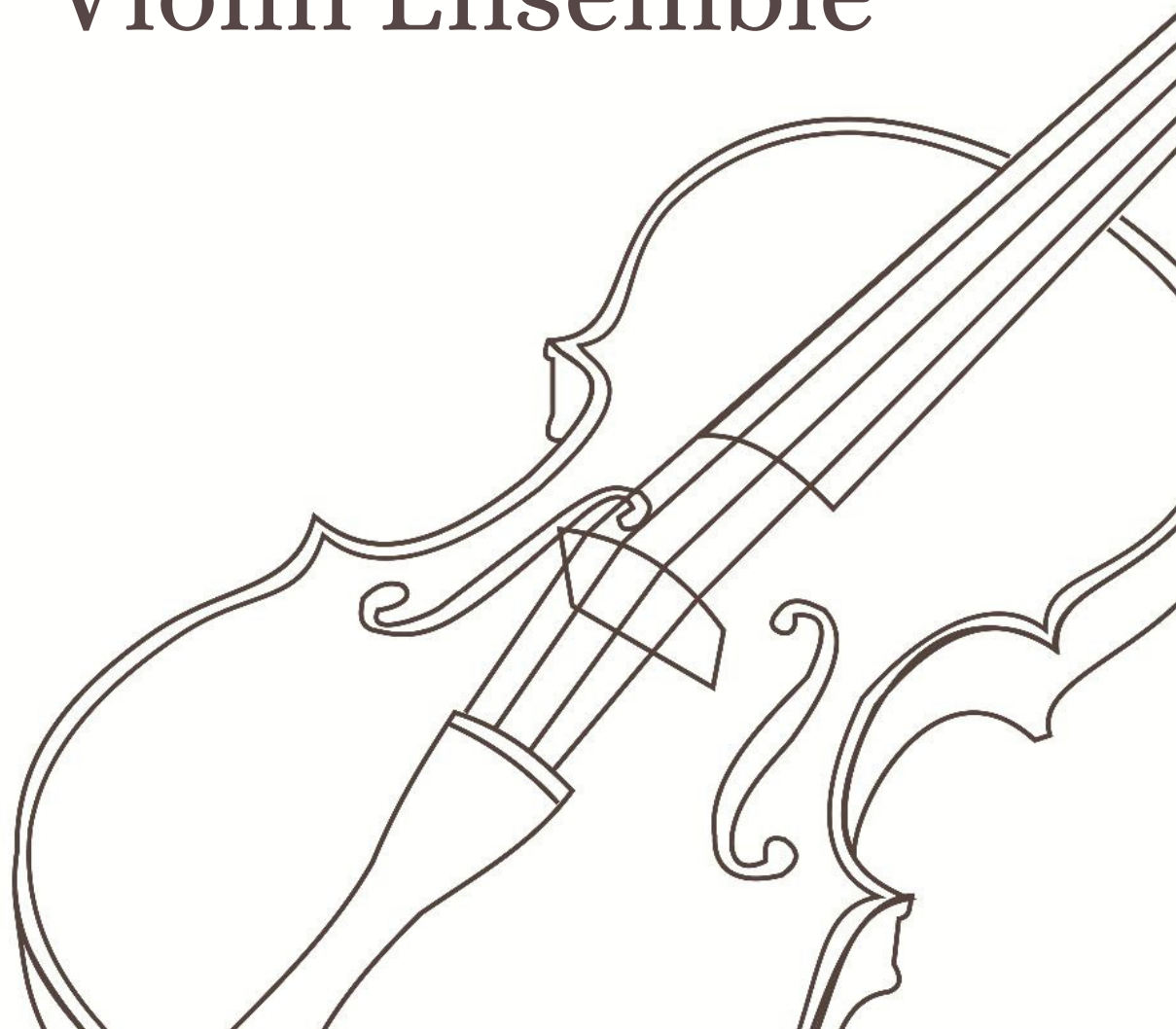


# God Save the Queen

For mixed-ability  
Violin Ensemble



# God Save the Queen

Violin 1a

Violin 1b

Violin 2

Violin 3

Violin 4

Violin 1b lyrics: d d r t<sub>1</sub> d r m m f m r d

Violin 3 chords: G Am D A<sup>7</sup> D G Em Am G D<sup>7</sup> Em

5

V.1a

V.1b

V.2

V.3

V.4

V.1b lyrics: r d t<sub>1</sub> d s s s s f m

V.3 chords: Am G D<sup>7</sup> G D<sup>7</sup> G

9

V.1a

V.1b

V.2

V.3

V.4

f f f f m r m f m r d

D<sup>7</sup> G D G

12

V.1a

V.1b

V.2

V.3

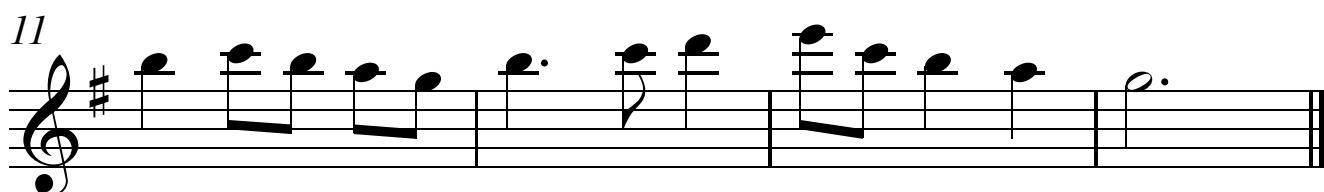
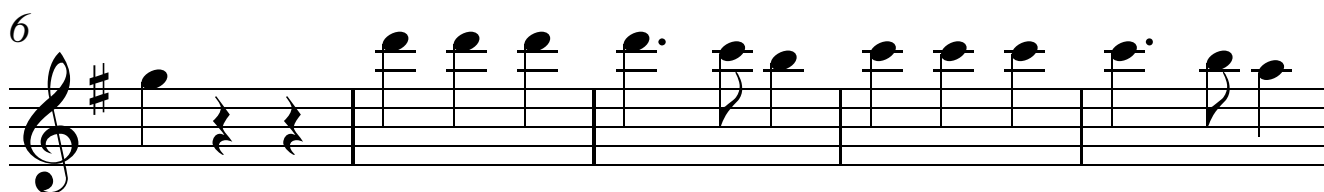
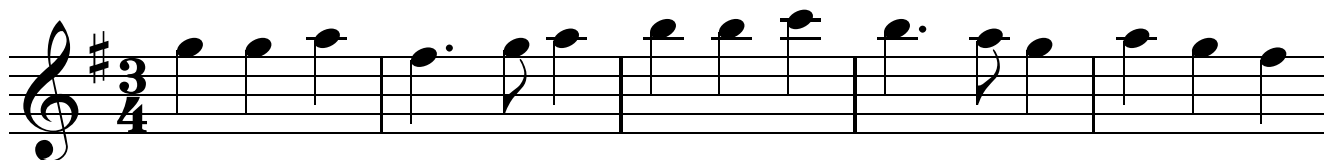
V.4

m f s l f m r d

G C G D<sup>7</sup> G

Violin 1a

# God Save the Queen



Violin 1b

# God Save the Queen

Measures 1-5 of the piece. The key signature is one sharp (F#) and the time signature is 3/4. The notes are: G4 (quarter), A4 (quarter), B4 (quarter), A4 (quarter), G4 (quarter), F#4 (quarter), E4 (quarter), D4 (quarter), C4 (quarter), B3 (quarter), A3 (quarter), G3 (quarter), F#3 (quarter), E3 (quarter), D3 (quarter), C3 (quarter), B2 (quarter), A2 (quarter), G2 (quarter).

d d r t<sub>l</sub> d r m m f m r d r d t<sub>l</sub>

6

Measures 6-10. Measure 6 starts with a double bar line and a fermata over the G2 note. Measures 7-10 continue the melody: A2 (quarter), B2 (quarter), C3 (quarter), B2 (quarter), A2 (quarter), G2 (quarter), F#2 (quarter), E2 (quarter), D2 (quarter), C2 (quarter), B1 (quarter), A1 (quarter), G1 (quarter), F#1 (quarter), E1 (quarter), D1 (quarter), C1 (quarter), B1 (quarter), A1 (quarter), G1 (quarter).

d s s s s f m f f f f m r

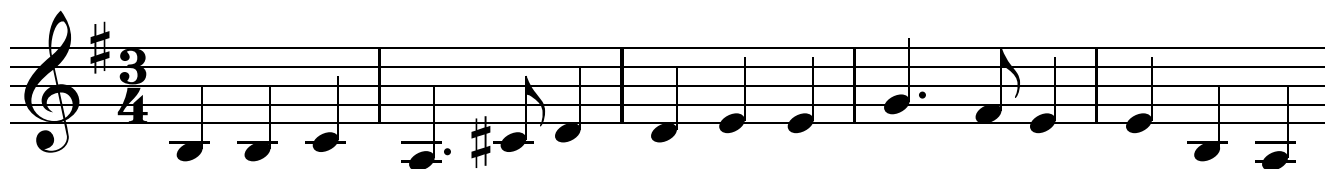
11

Measures 11-14. Measure 11 starts with a double bar line and a fermata over the G1 note. Measures 12-14 continue the melody: A1 (quarter), B1 (quarter), C2 (quarter), B1 (quarter), A1 (quarter), G1 (quarter), F#1 (quarter), E1 (quarter), D1 (quarter), C1 (quarter), B1 (quarter), A1 (quarter), G1 (quarter), F#1 (quarter), E1 (quarter), D1 (quarter), C1 (quarter), B1 (quarter), A1 (quarter), G1 (quarter).

m f m r d m f s l f m r d

Violin 2

# God Save the Queen



Violin 3

# God Save the Queen

G Am D A<sup>7</sup> D G Em Am G D<sup>7</sup> Em Am G D<sup>7</sup>

1 2 3 4 5

6 G D<sup>7</sup> G D<sup>7</sup>

6 7 8

10 G D G G C G D<sup>7</sup> G

9 10 11 12

Violin 4

# God Save the Queen

