

# Wellerman

## Sea Shanty

Nathan Evans,  
Arr. Duo Klier

Verse

Violin 1

Violin 2

Violin 3

There once was a ship that put to sea, the name of the ship was the Bill-y o' Tea. The

tap on your violin

l. h. pizz.

5

winds blew up, her bow dipped down. Oh blow, my bull - y boys blow.

9

Chorus

C G Am Em

Soon, may the Well - er - man come, to bring us su - gar and tea and rum.

arco

13

C G Em Bm Em

One day, when the ton - guin' is done we'll take our leave and go.

# Wellerman

## Sea Shanty

Nathan Evans,  
Arr. Duo Klier

Verse

5

There once was a ship that put to sea, the name of the ship was the Bill-y o' Tea. The

5

winds blew up, her bow dipped down. Oh blow, my bull-y boys blow.

Chorus

9

Soon, may the Well-er-man come, to bring us su-gar and tea and rum.

13

One day, when the ton-guin' is done we'll take our leave and go.

# Wellerman

## Sea Shanty

Nathan Evans,  
Arr. Duo Klier

Verse

tap on your violin

Musical notation for the first line of the Verse section, measures 1-4. The key signature is one sharp (F#) and the time signature is common time (C). The notation consists of a treble clef, a sharp sign, and a common time signature. The first measure contains a whole rest. The following three measures each contain a sequence of eighth notes: G4, A4, B4, C5, with an 'x' above the first note of each measure, indicating a tap on the violin.

5

Musical notation for the second line of the Verse section, measures 5-8. The notation continues with eighth notes: D5, E5, F#5, G5, with an 'x' above the first note of each measure, indicating a tap on the violin. The section ends with a double bar line.

Chorus

9

Musical notation for the first line of the Chorus section, measures 9-12. The notation consists of a treble clef, a sharp sign, and a common time signature. The first measure contains a square symbol above the staff, indicating a tap. The following notes are quarter notes: G4, A4, B4, C5, D5, E5, F#5, G5.

13

Musical notation for the second line of the Chorus section, measures 13-16. The notation continues with quarter notes: A4, B4, C5, D5, E5, F#5, G5. The section ends with a double bar line.

# Wellerman

## Sea Shanty

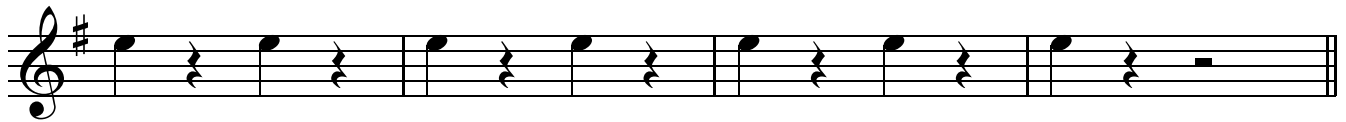
Nathan Evans,  
Arr. Duo Klier

Verse

l. h. pizz.



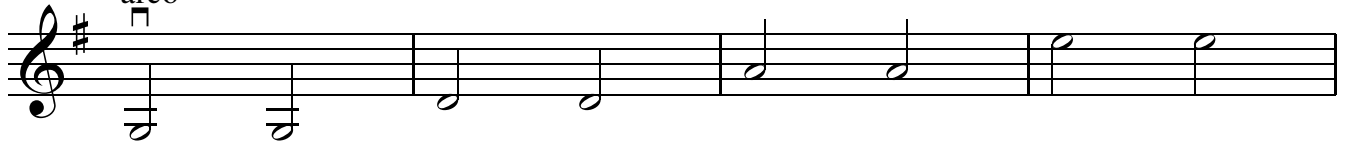
5



Chorus

9

arco



13

